
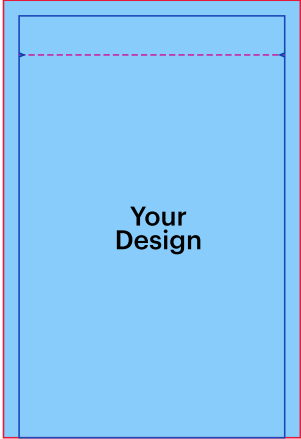

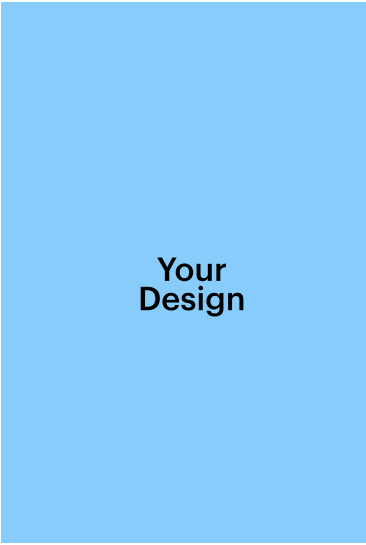
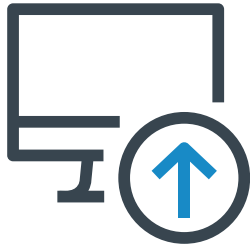


HOW TO USE OUR TEMPLATES TO CREATE YOUR STAND-UP POUCH DESIGN.

Here's a few handy hints to create an upload-ready file for your stand-up pouch.

1. Choose your pouch size	2. Download the template
<p>Overview Specs & Templates Options</p> <hr/> <h3>Product Specs & Templates</h3> <p>Size</p> <p>500 ml: 17 x 27 cm</p> <p>On our Specs & Templates tab, choose your pouch size. We offer 4 different size options which you can browse at the bottom of this document.</p>	 <p>Open the file using a vector graphic editor like Adobe Illustrator or CorelDraw.</p>
3. Insert your design	4. Delete / turn off guidelines
 <p>Your Design</p> <p>Create two separate designs for the front and back of your pouch. The same template can be used. Follow the guidelines & design tips below.</p> <hr/> <p> Do not alter the scale of the drawing or resize the template.</p>	 <p>Your Design</p> <p>When your design is complete and you're ready to save it.</p>

5. Save & upload your design



Save both the front and back designs of your pouch separately as a PDF and upload it to our website.



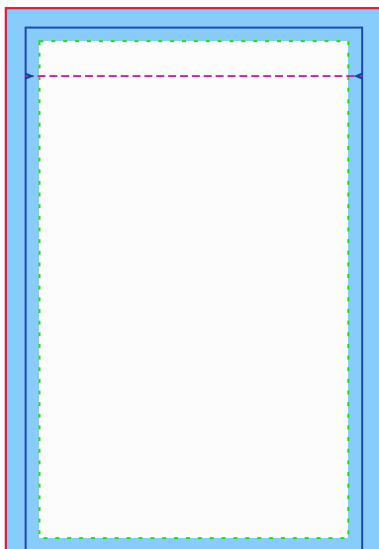
Success!

Here's a reference of what your pouch might look like assembled.

TIPS FOR DESIGNING

1. We recommend locking layers before you start designing, so guidelines aren't accidentally moved.
2. Be sure to leave the document size unaltered.
3. All files should be created in CMYK (cyan, magenta, yellow, black), with the Fogra 39 colour profile. Images in RGB or with PANTONE colours are converted automatically using a standard colour separation profile.
4. The ideal resolution is between 250 and 300 dpi.
5. Create and upload two separate designs for the front and back of your pouch.

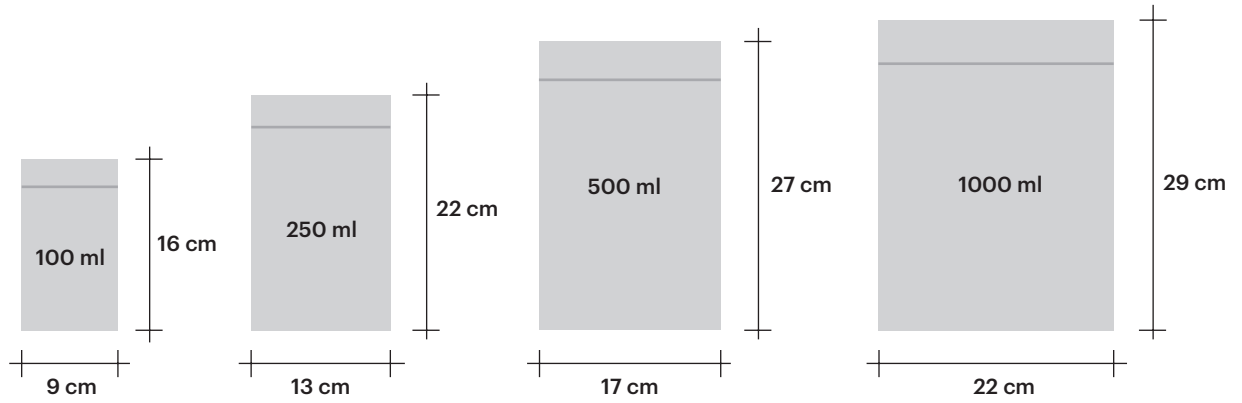
A GUIDE TO GUIDELINES



	BLEED Indicates where your background image must extend-to, to avoid white edges or any blank spaces on your pouch.
	TRIM LINE This is where we'll cut the artwork.
	SAFE LINE For the best design, graphics and text should not pass this line.
	FOLD LINE Shows the folds and creases of the pouch. For a clean, legible design, it's best that text doesn't pass the fold line.

STAND-UP POUCH SIZES

No hole



With hole

